



ALT
«Board View»
viewer

HOW TO USE

Click
here to
download
ALT Board View
viewer



P1V8_S3

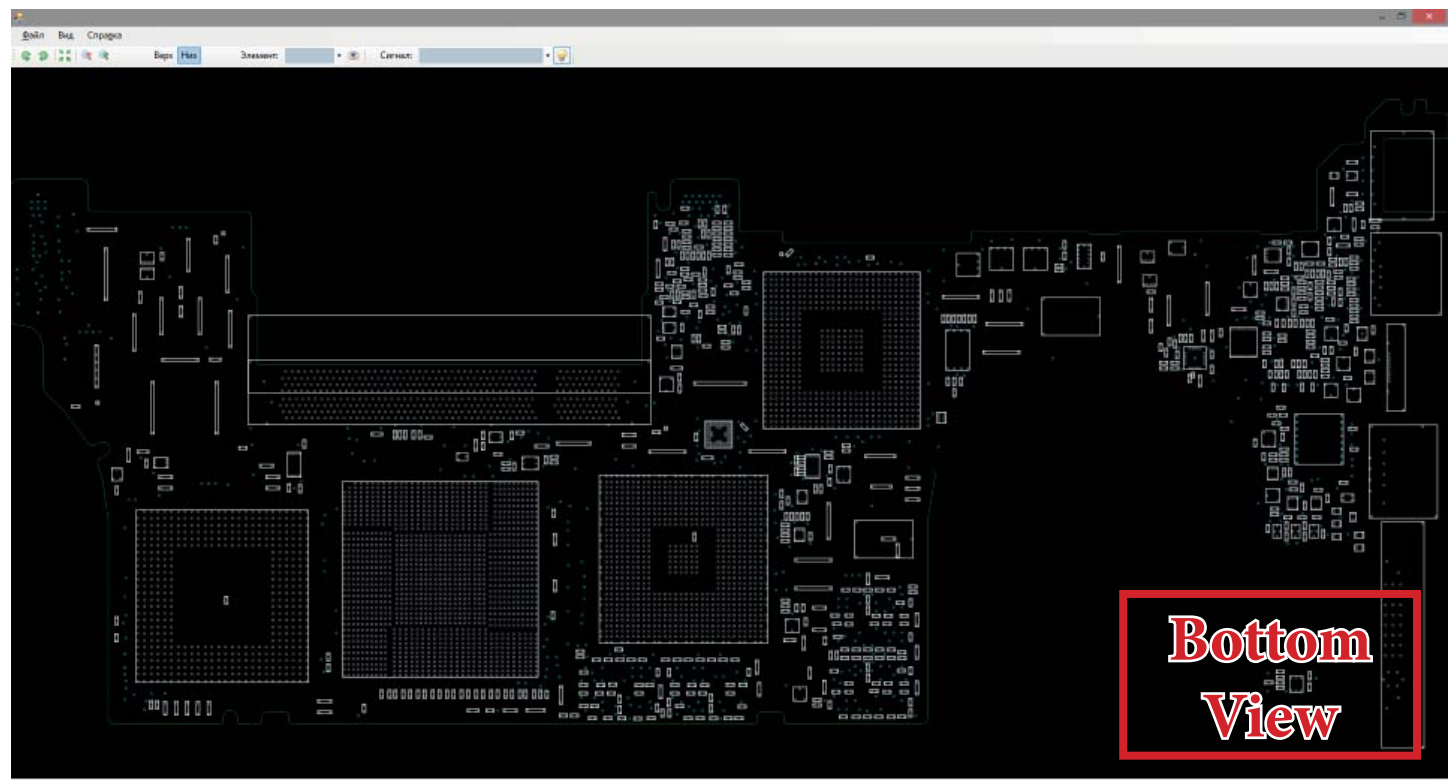
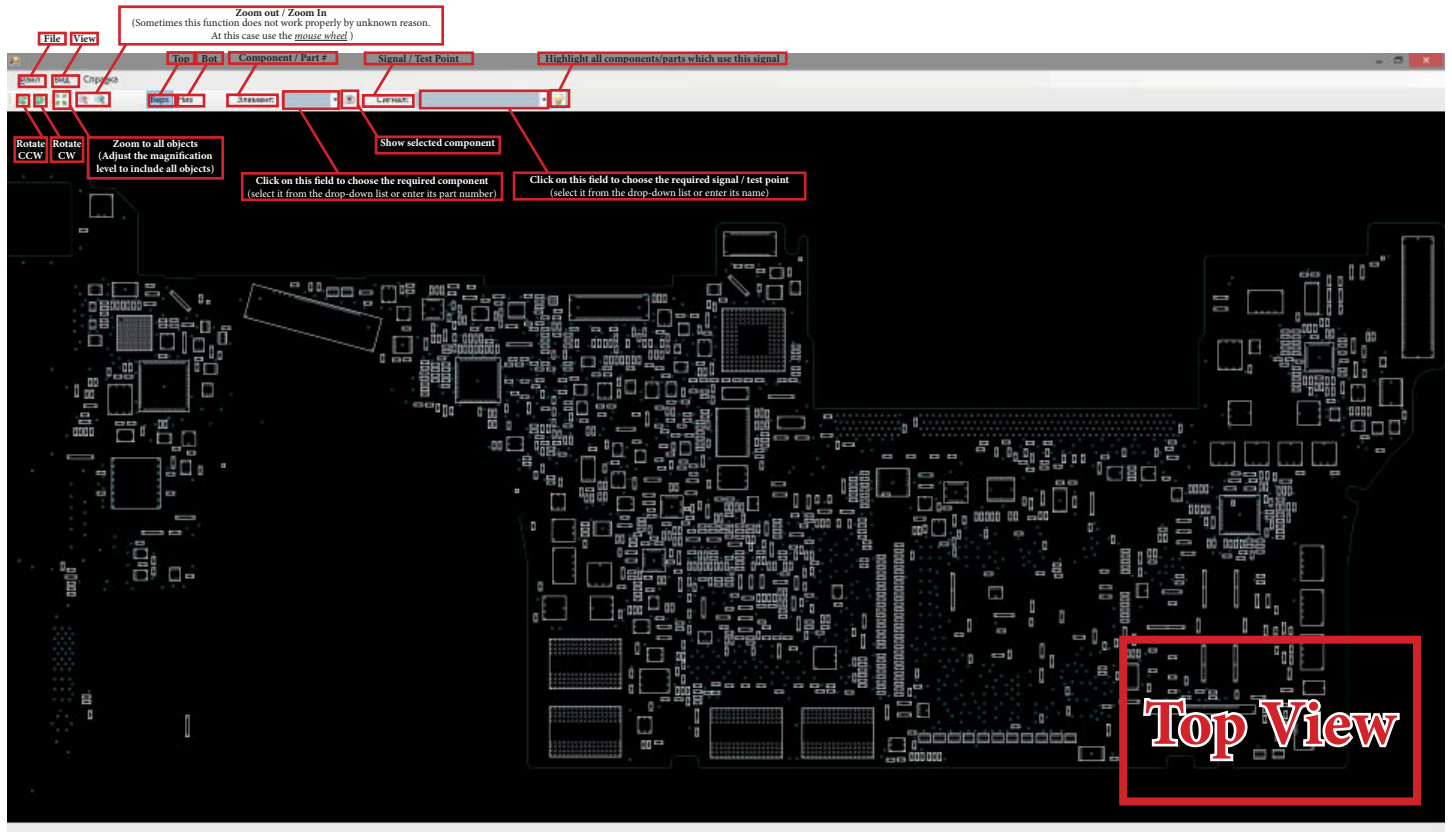


Operating System :
Windows XP / Vista / 7 / 8 / 10 (32/64 bit)

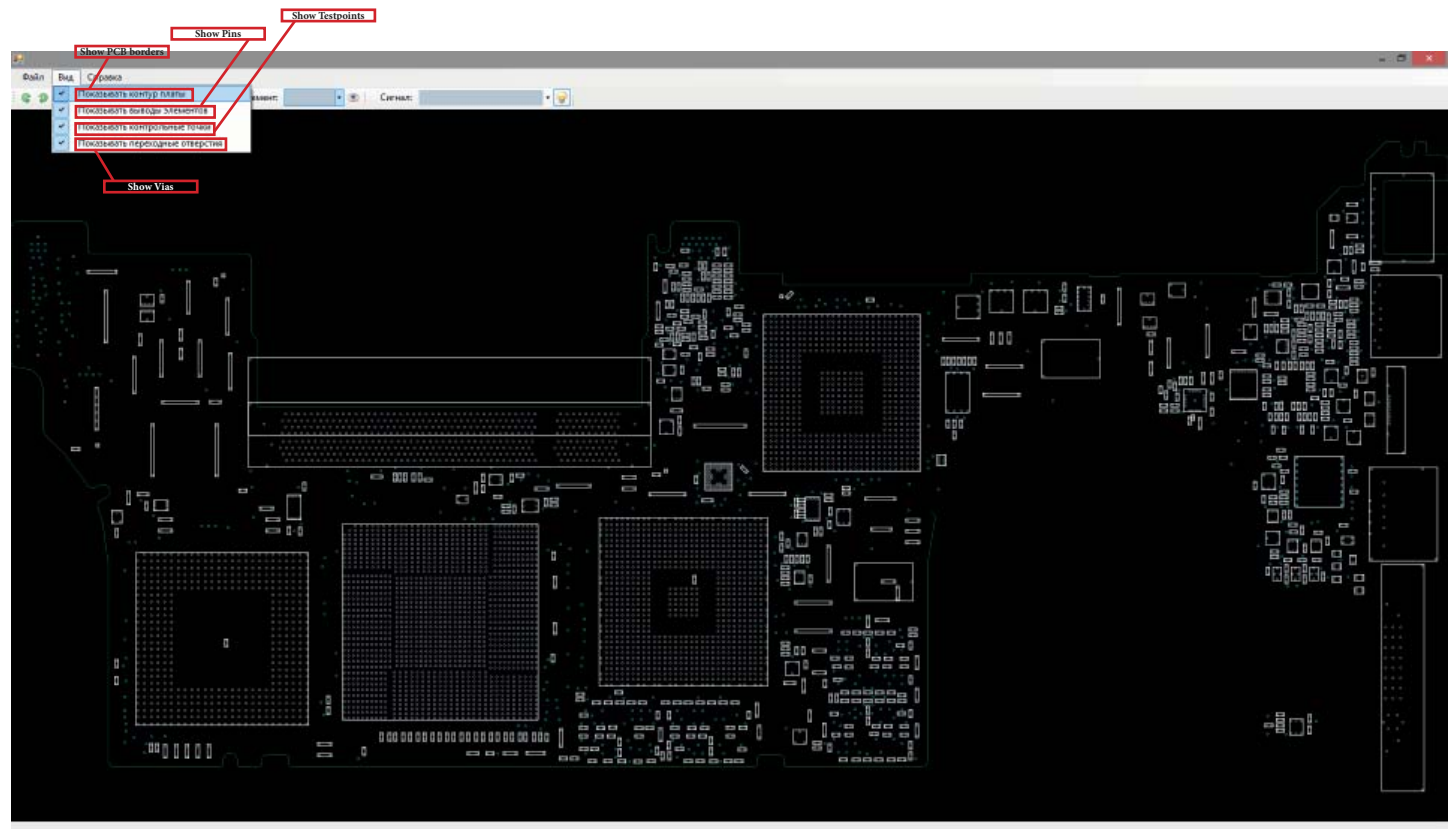
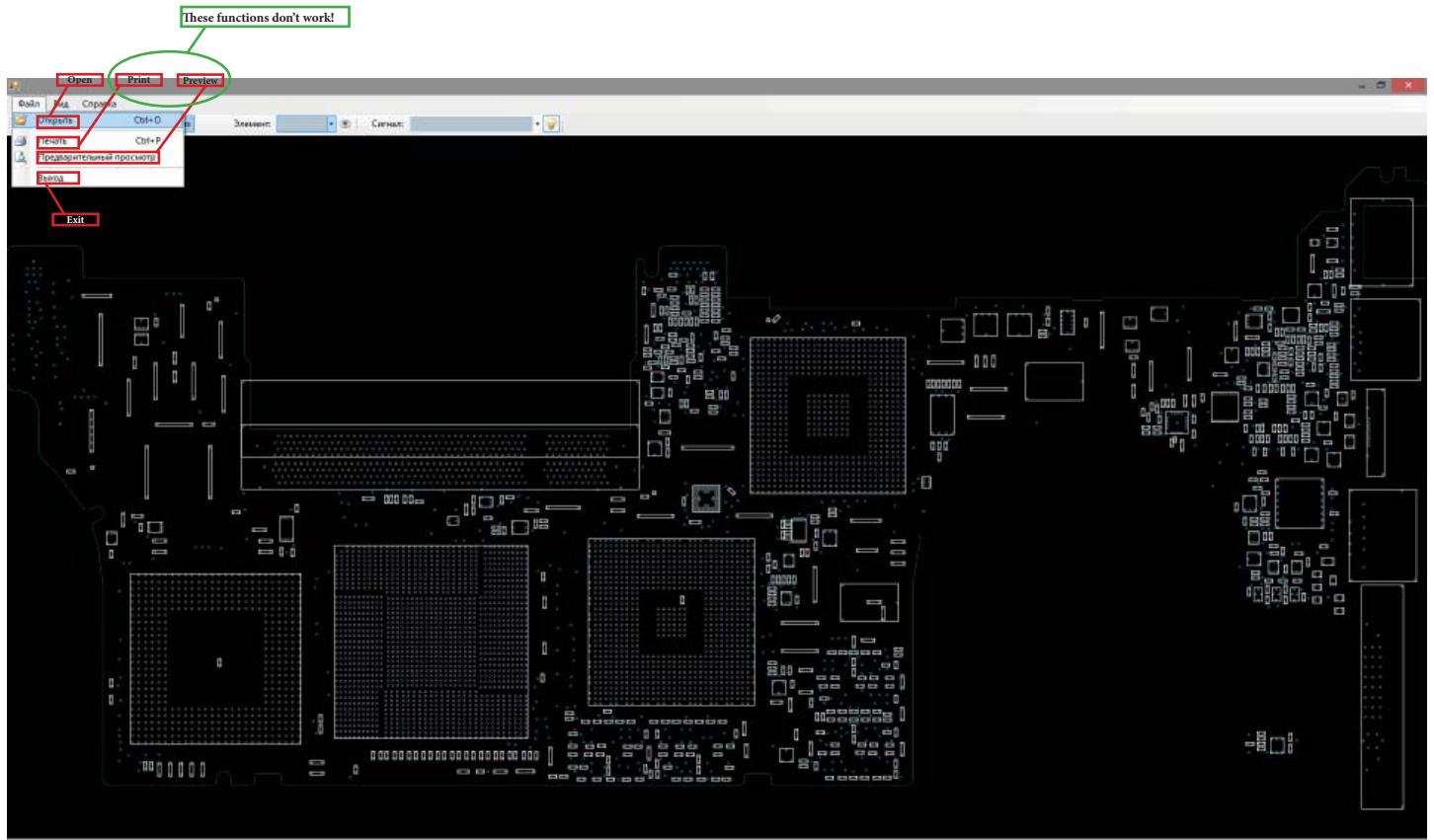
The Microsoft Framework 3.5 need to be installed!
You can [download it](#) from the official website for free

**This software will not work under MacOS directly,
but you can run it on your laptop or iMac
using a «Virtual Machine»**

INTERFACE (main menu)



INTERFACE (drop-down menu)

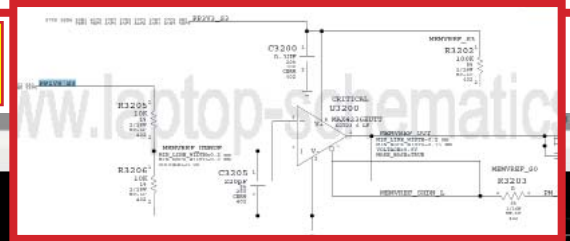


HOW TO SEARCH (test points and components)

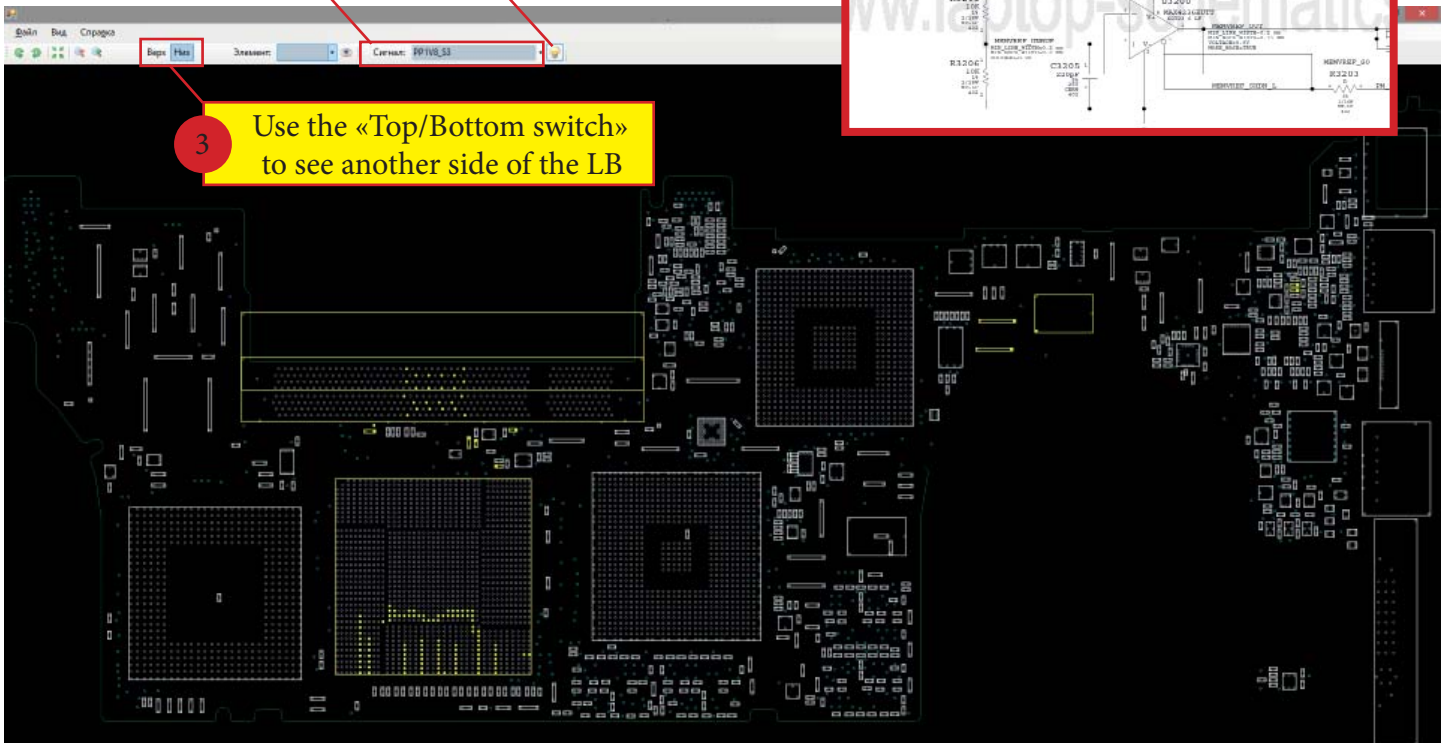
1 Enter **PP1V8_S3** here or choose it from the drop-down list

For example let's find **PP1V8_S3** signal on the logic board

2 Click this button to highlight all elements which use this signal



3 Use the «Top/Bottom switch»
to see another side of the LB



1 Enter **U8900** here or choose it from the drop-down list

For example let's find **U8900** on the logic board

2 Click this button to show the chosen component on the LB

