


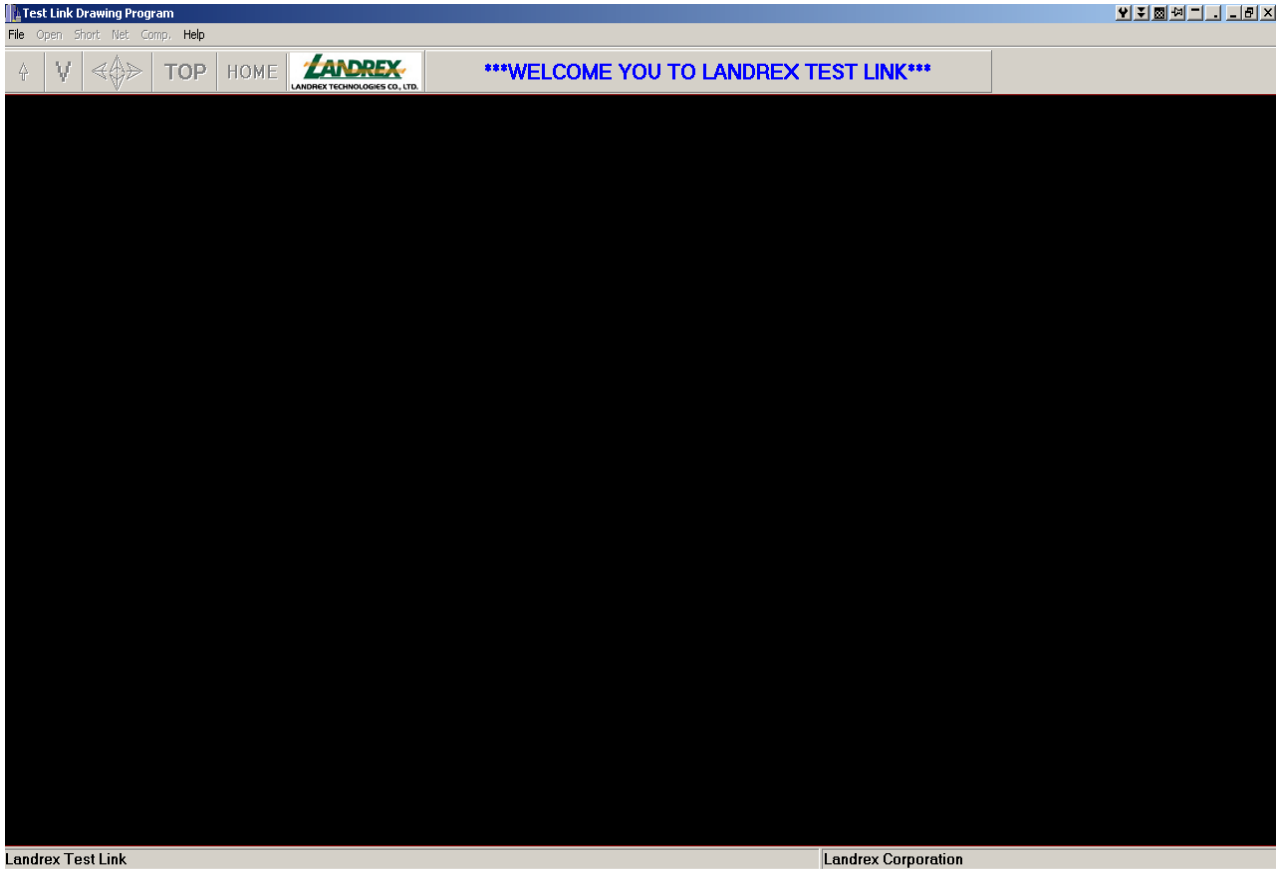
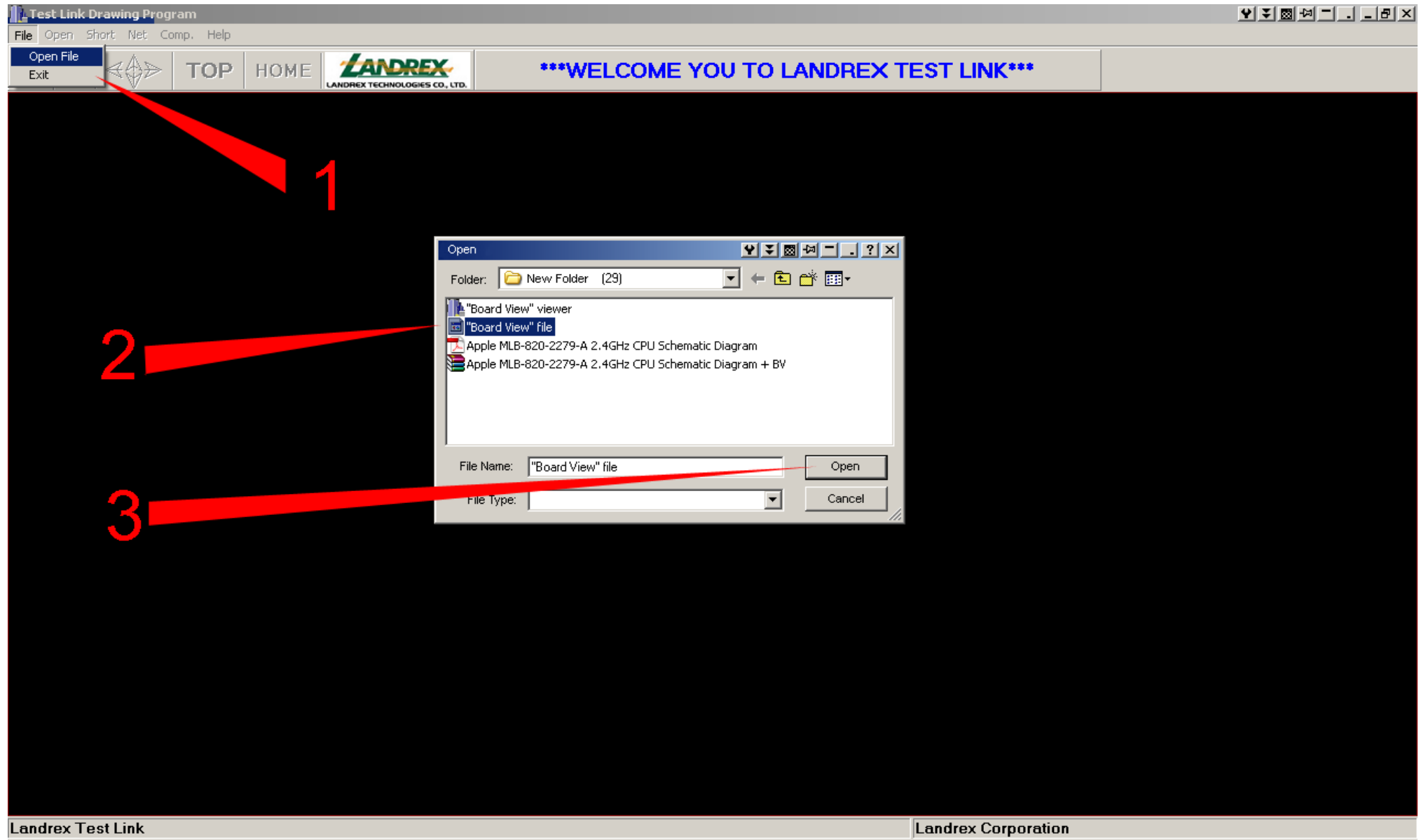


1) You have the following files >

	"Board View" viewer	652 KB
	"Board View" file	552 KB
	Apple MLB-820-2279-A 2.4GHz CPU Schematic Diagram	1 863 KB

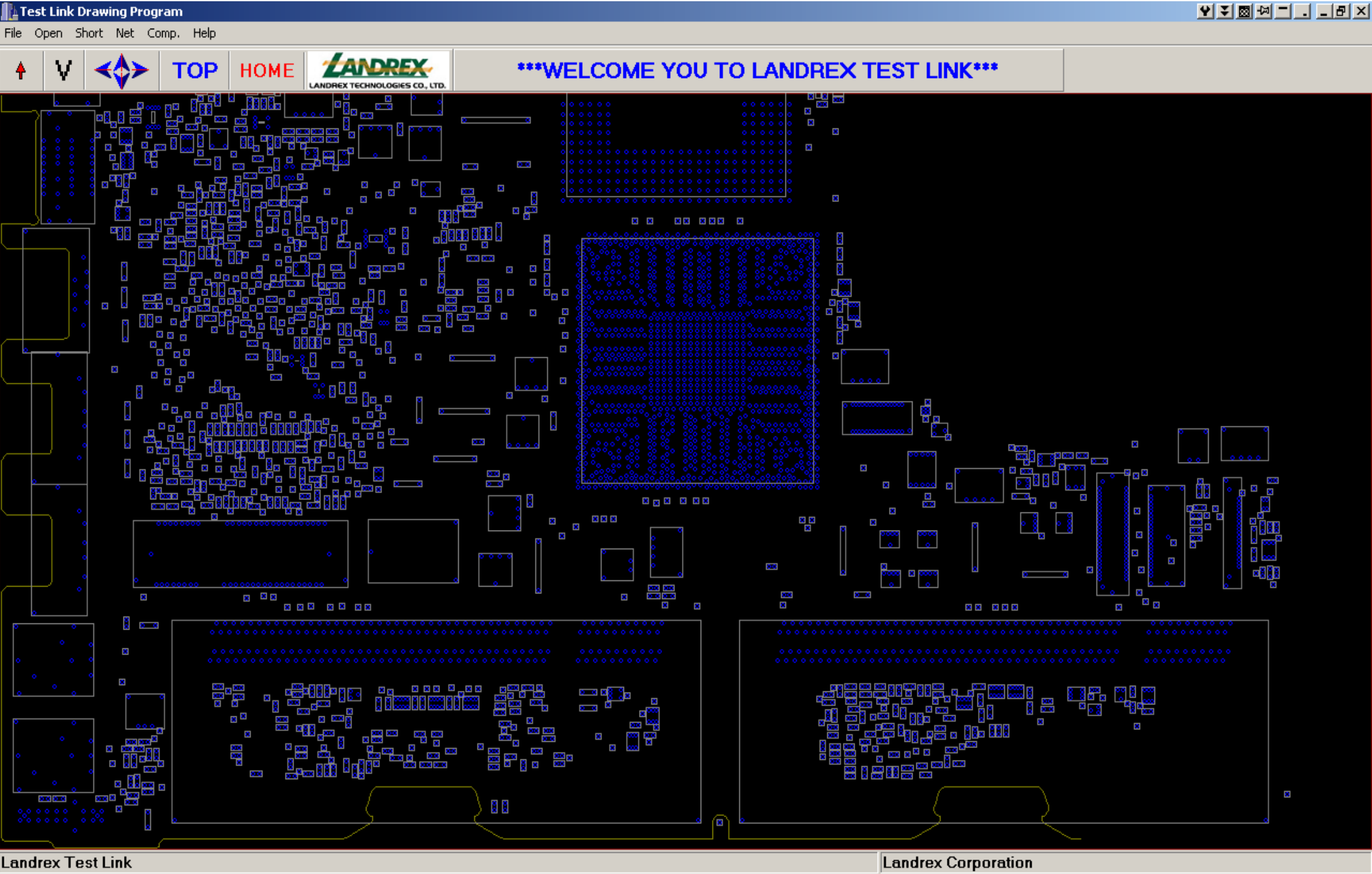
2) Run "Board View" viewer>








3) Open "Board View" file >

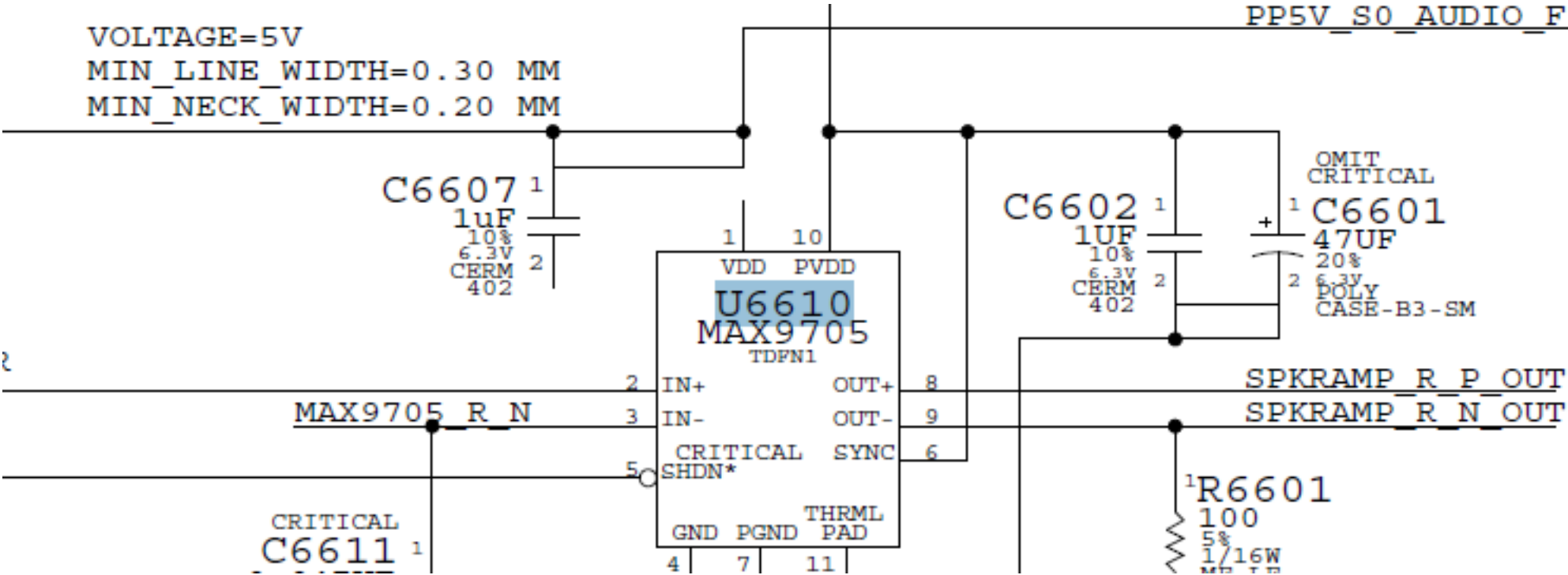
4) Now you can see your logic board layout



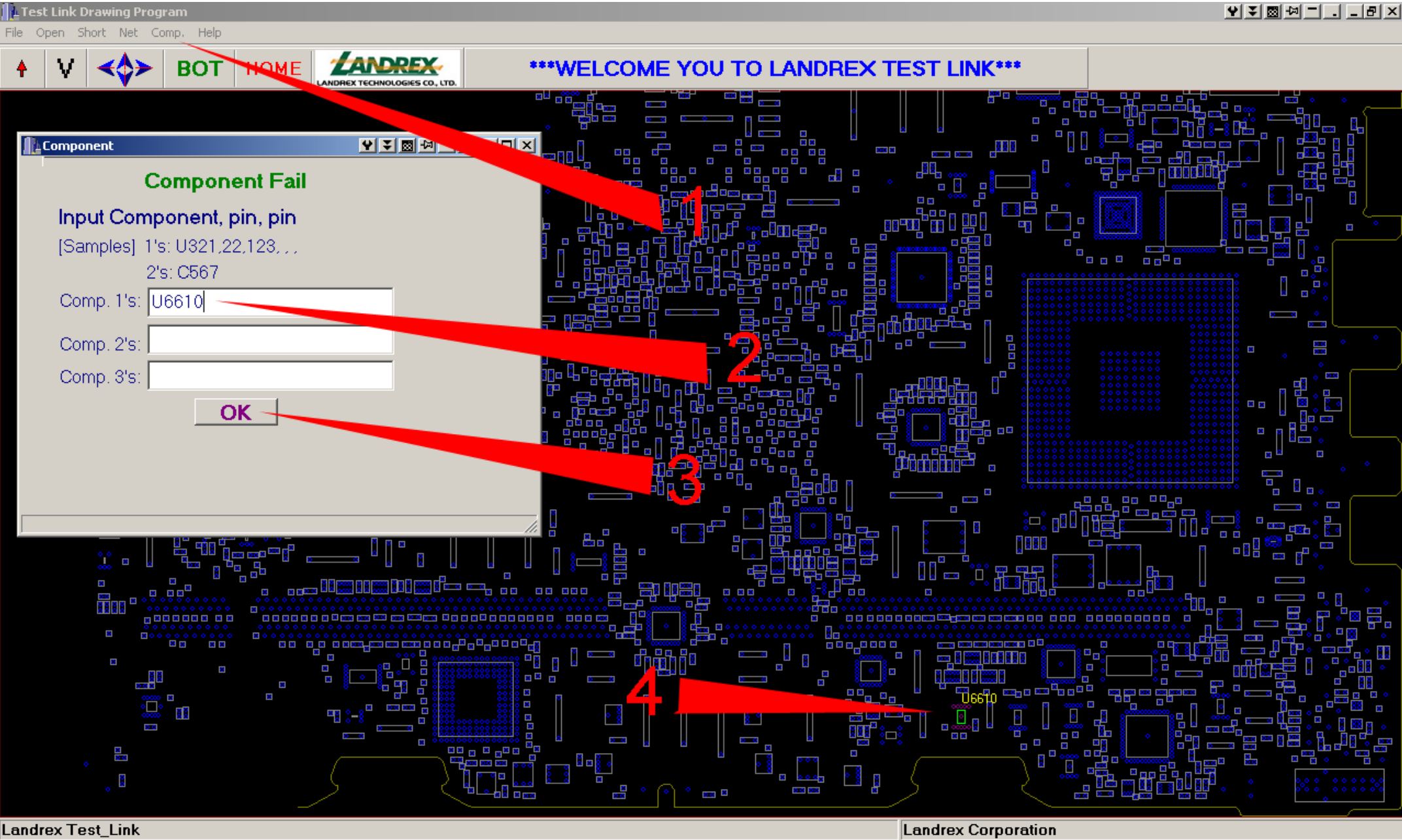
5) Open the schematic diagram

	"Board View" viewer	652 KB
	"Board View" file	552 KB
	Apple MLB-820-2279-A 2.4GHz CPU Schematic Diagram	1 863 KB

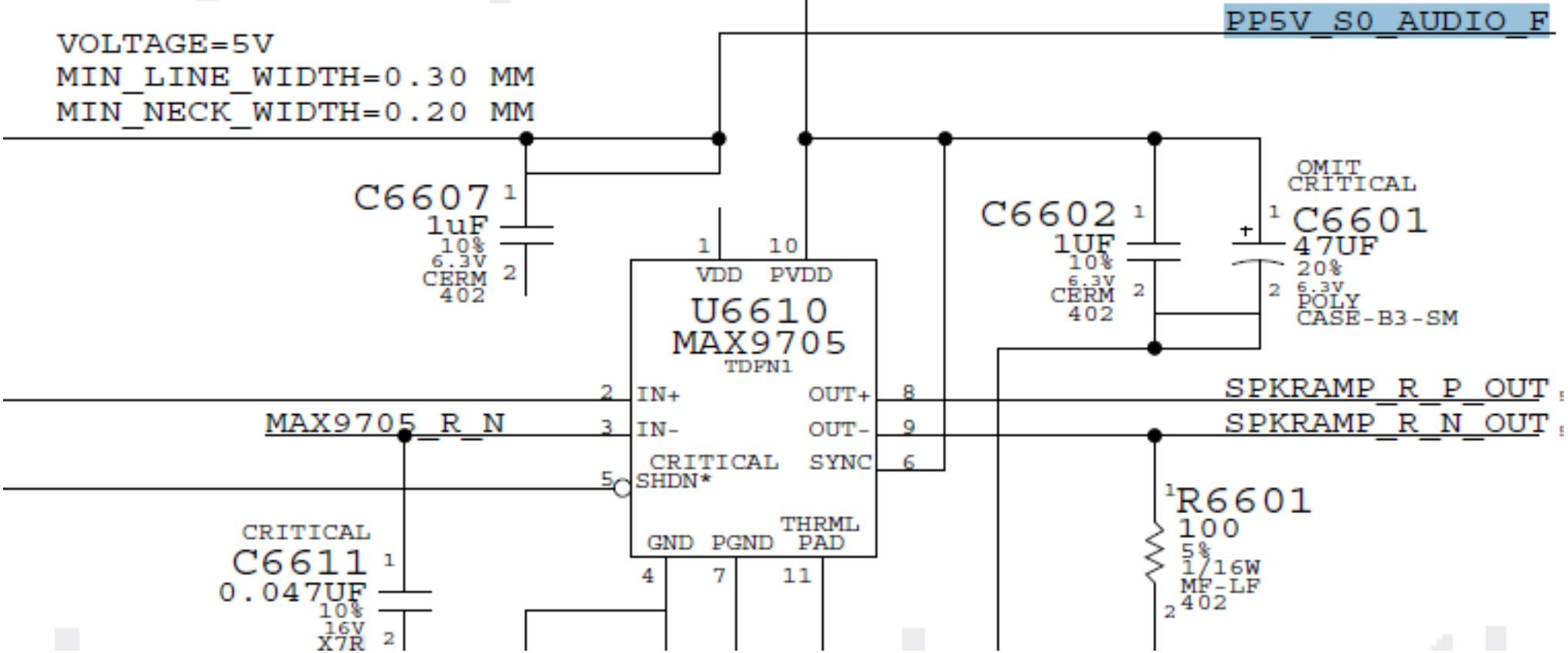
6) For example you need to find U6610



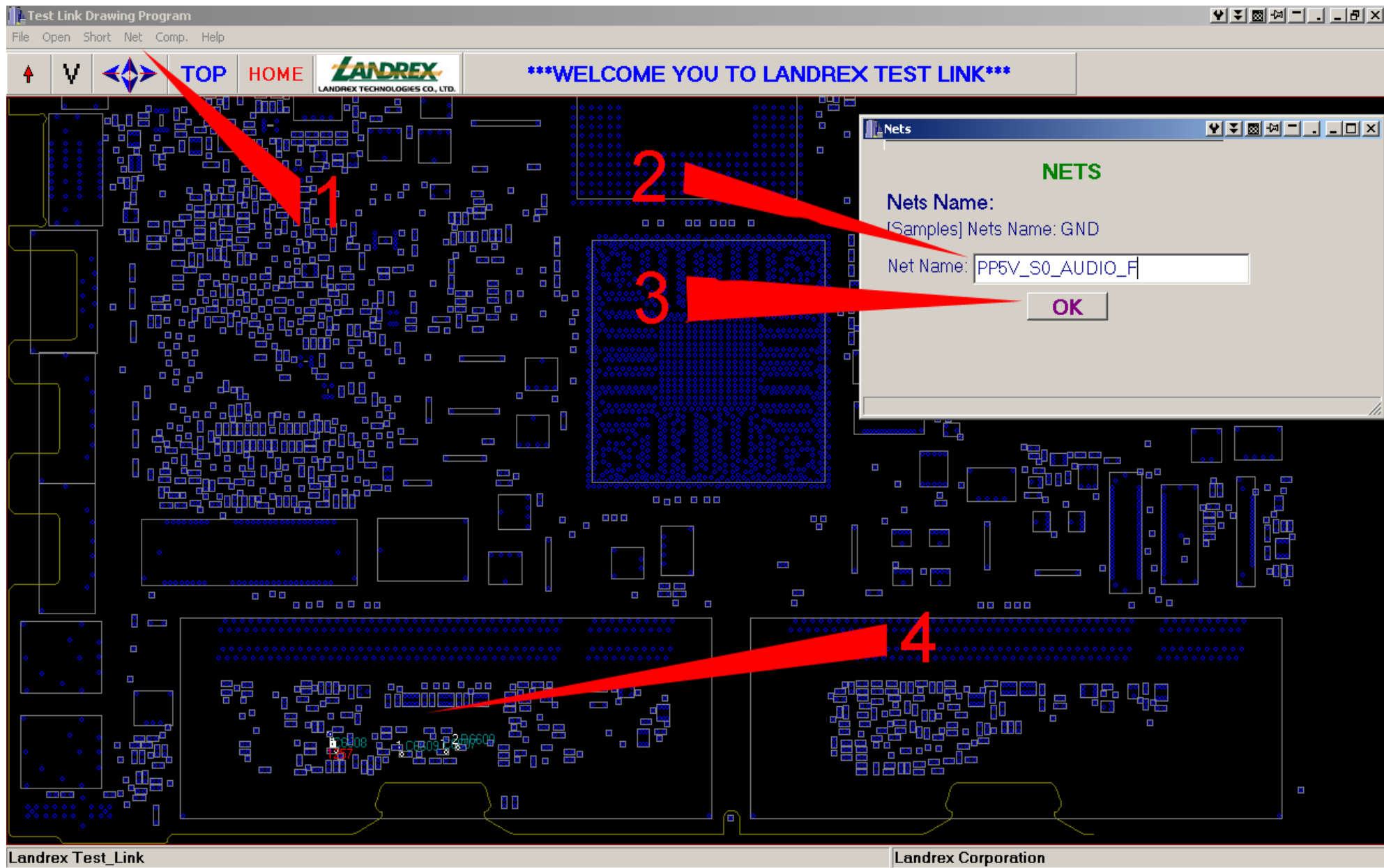
7) To find the U6610 on the logic board please follow these steps . Now you can see the U6610 on the logic board



6) One more example - you need to find a signal : PP5V_S0_AUDIO_F



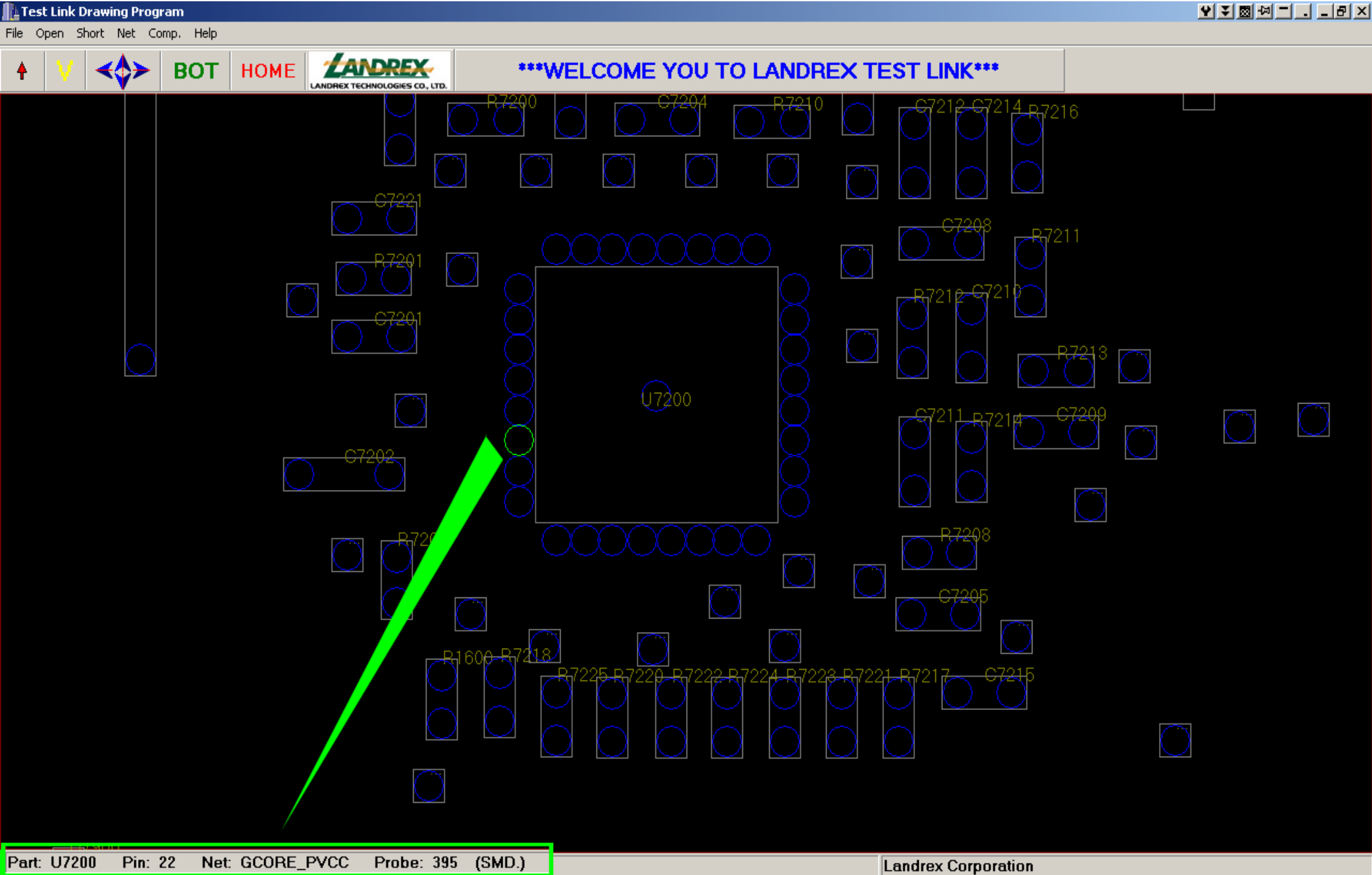
7) To find this signal on the logic board please follow these steps . Now you can see it on the logic board



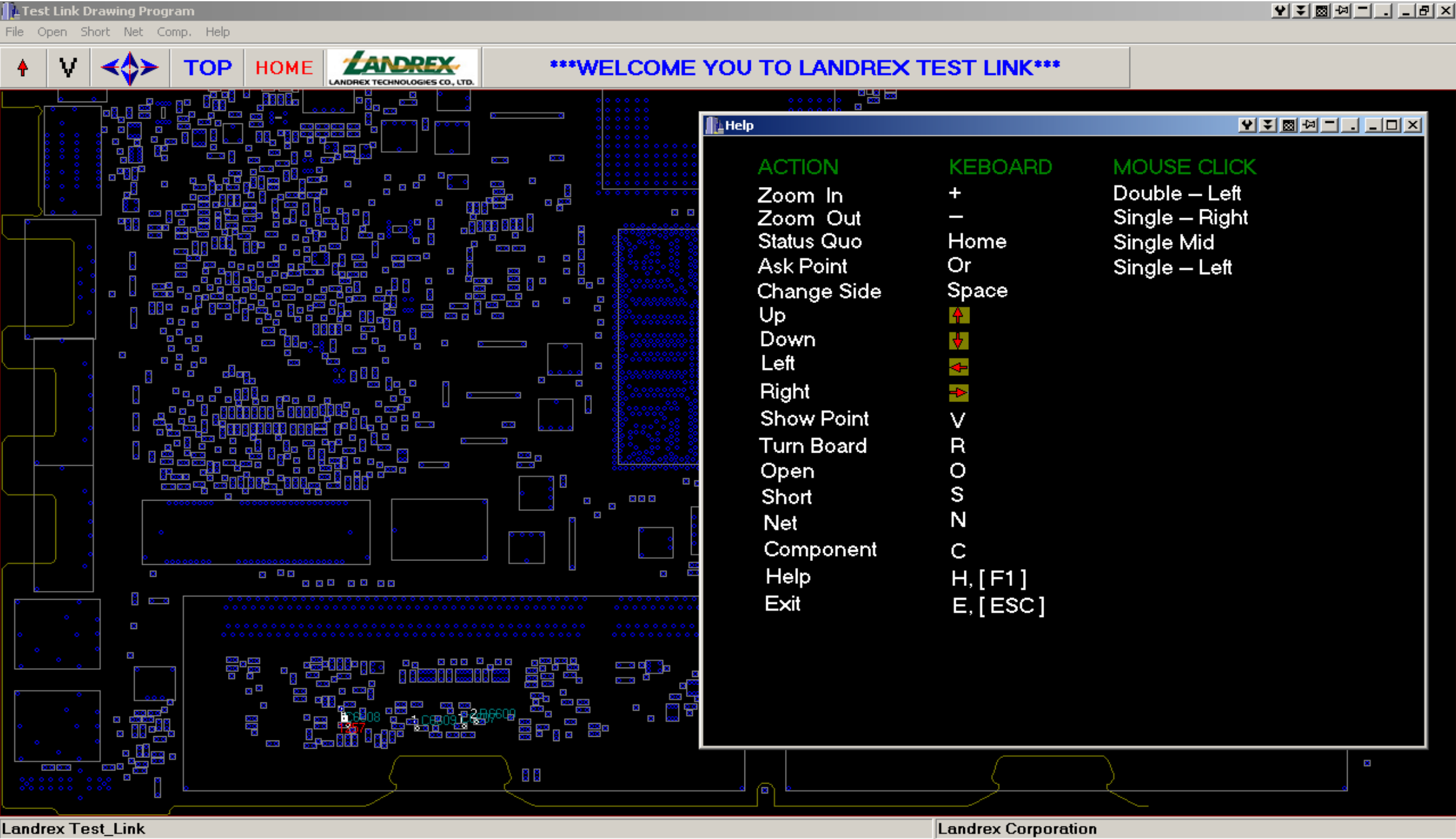
www.laptop-schematics.com



9) Also you can see a property of any pin by clicking on it .



10) To see shortcuts , click Help > Shortcut



Thank you !



www.laptop-schematics.com